



*Kilmory, Lochgilphead, PA31 8RT
Tel: 01546 602127 Fax: 01546 604435
DX 599700 LOCHGILPHEAD
31 October 2018*

NOTICE OF MEETING

A meeting of the **MID ARGYLL, KINTYRE AND THE ISLANDS COMMUNITY PLANNING GROUP** will be held in the **COUNCIL CHAMBERS, KILMORY CASTLE, LOCHGILPHEAD WITH VC FACILITIES IN CAMPBELTOWN GRAMMAR SCHOOL, CAMPBELTOWN AND THE CUSTOMER SERVICE POINT, BOWMORE, ISLE OF ISLAY** on **WEDNESDAY, 7 NOVEMBER 2018 at 10:00 AM**, which you are requested to attend.

Douglas Hendry
Executive Director of Customer Services

BUSINESS

- 1. APOLOGIES FOR ABSENCE**
- 2. DECLARATIONS OF INTEREST (IF ANY)**
- 3. MINUTES**
 - (a) Mid Argyll, Kintyre and the Islands Community Planning Group - 8 August 2018 (Pages 5 - 12)
- 4. AREA COMMUNITY PLANNING ACTION PLAN**
 - (a) Build Relationships with the Youth Forum
Update by Ray Flanagan, Youth Forum and Betty Rhoddick, Lochgilphead Community Council
 - (b) Lochgilphead Regeneration
Update on Lochgilphead Front Green Project by Transformation Projects and Regeneration Manager

- (c) Transport and Connectivity Report
Update and presentation from Highlands and Islands Enterprise

5. COMMUNITY FOCUS

- (a) West Highland Anchorages and Moorings Association (Pages 13 - 14)
Update on community owned and managed pontoons and moorings
- (b) Jura Passenger Ferry (Pages 15 - 18)
Update by Community Development Officer

**6. ARGYLL AND BUTE OUTCOME IMPROVEMENT PLAN 2013-2023 - OUTCOME 1
(THE ECONOMY IS DIVERSE AND THRIVING)**

- (a) Tourism
Update from Visit Scotland (to follow)

**7. ARGYLL AND BUTE OUTCOME IMPROVEMENT PLAN 2013-2023 - OUTCOME 2
- (WE HAVE INFRASTRUCTURE THAT SUPPORTS SUSTAINABLE GROWTH)**

- (a) Islay Housing Needs (Pages 19 - 24)
Update by Team Leader - East
- (b) ACHA
Update by Regional Manager
- (c) Jura Community Council
Update on infrastructure Issues on Jura
- (d) Islay Airport - Infrastructure and Capacity
Update by HIAL
- (e) Superfast Broadband - Rural Areas (Pages 25 - 44)
Update by Graduate Digital Liaison Officer
- (f) A83 UPDATE
Update by Transport Scotland (to follow)

**8. ARGYLL AND BUTE OUTCOME IMPROVEMENT PLAN 2012-2023 - OUTCOME 6
(PEOPLE LIVE IN STRONGER AND SAFER COMMUNITIES)**

- (a) Scottish Ambulance Service
Update by Mark Benton

9. PARTNERS UPDATE

10. DATE OF NEXT MEETING - WEDNESDAY 6 FEBRUARY 2019 AT 10.00AM, VENUE TO BE CONFIRMED

Discussion facilitated by the Area Committee Manager on items for inclusion on the Agenda for the next meeting.

Outcomes to be discussed.

Outcome 3 – Education, skills and training maximises opportunities for all.

Outcome 4 – Children and young people have the best possible start.

MID ARGYLL, KINTYRE AND THE ISLANDS COMMUNITY PLANNING GROUP

Andy Buntin (Chair)

Iain Brodie (Vice-Chair)

Contact: Andrea Moir, Senior Committee Assistant - 01369 708662

This page is intentionally left blank

**MINUTES of MEETING of MID ARGYLL, KINTYRE AND THE ISLANDS COMMUNITY
PLANNING GROUP held in the MACHRIHANISH AIRBASE
on WEDNESDAY, 8 AUGUST 2018**

Present: Andy Buntin, Lochgilphead Community Council (Chair)

Councillor John Armour
 Councillor Robin Currie
 Councillor Donald MacMillan
 Councillor Sandy Taylor
 Sergeant Ian McNicol, Police Scotland
 PC Karen Cairns, Police Scotland
 Iain Brodie, East Kintyre Community Council
 Shona Barton, Area Committee Manager, Argyll and Bute Council
 Hazel MacInnes, Committee Services Officer, Argyll and Bute Council
 Alison McGrory, NHS Highland
 John Bakes, Southend Community Council
 Lesley McKay, Addiction Services
 Ronnie Soudan, Scottish Fire and Rescue Service
 Tracy Chambers, Kintyre Link Club and Dochas Centre
 Margaret Wallace, Argyll TSI
 Samantha Somers, Community Planning Officer, Argyll and Bute Council
 Antonia Baird, Community Development Officer
 Malcolm McMillan, Machrihanish Airbase Community Company (MACC)

1. APOLOGIES

Apologies for absence were received from Mary MacCallum Sullivan, Jeanmary Knowles and Councillor Anne Horn.

2. DECLARATIONS OF INTEREST

There were no declarations of interest intimated.

3. MINUTES

(a) Mid Argyll, Kintyre and the Islands Community Planning Group - 2nd May 2018

The Minutes of the meeting of the Mid Argyll, Kintyre and the Islands Community Planning Group held on 2 May 2018 were approved as a correct record.

4. APPOINTMENT OF VICE CHAIR

Consideration was given to a report inviting the Area Community Planning Group to consider the appointment of a Vice-Chair.

Decision

The Area Community Planning Group –

1. Agreed to appoint Iain Brodie as Vice-Chair of the Group.
2. Noted that the dates of the Community Planning Partnership Management Committee meetings would be forwarded to Mr Brodie to allow him to attend and observe the work of the Management Committee.

(Reference: Report by Area Governance Manager dated August 2018, submitted)

5. MANAGEMENT COMMITTEE UPDATE

The Area Community Planning Group gave consideration to issues highlighted within the briefing note from the meeting of the Community Planning Partnership Management Committee held on 27 June 2018.

Decision

The Area Community Planning Group noted the content of the briefing note from the meeting of the Management Committee held on 27 June 2018.

(Reference: Briefing Note: Community Planning Partnership Management Committee update dated August 2018, submitted)

6. AREA COMMUNITY PLANNING ACTION PLAN

(a) Presentation by MACC

The Area Community Planning Group received an informative presentation from Malcolm McMillan, Manager of Machrihanish Airbase Community Company (MACC).

The presentation informed the Group about the background of the community owned charity organisation, its vision, opportunities, threats, planned projects and future growth.

Discussion took place around the provision of broadband to the site and the criteria sought by the charity for the provision of funding to outside organisations.

The Chair thanked Mr McMillan for his enlightening presentation.

Decision

The Area Community Planning Group –

1. Noted the presentation from MACC.
2. Agreed that an update on the planned provision of high speed broadband in the Kintyre area, and in particular the MACC site, would

be sought from the Councils Digital Liaison Officer and from Highlands and Islands Enterprise, and;

3. That an update on broadband provision in the MAKI area would be added as an item for the next meeting.

(Reference: Presentation from Machrihanish Airbase Community Company (MACC))

7. COMMUNITY FOCUS

(a) Kintyre Link Club and Dochas Carer's Centre

The Area Community Planning Group received an in depth presentation from Tracy Chambers of the Kintyre Link Club and Dochas Care Centre.

The presentation informed the group about the background to the Kintyre Link Club, how it operates, the activities undertaken by its members and its financial situation. The presentation also informed the Group about the work of the Dochas Centre which had originated in Lochgilphead and had been run in the Kintyre area for the past 18 months.

Discussion took place around the provision of funding to the Kintyre Link Club and also around the provision of food by local supermarkets to these organisations which would otherwise be sent to landfill.

The Chair thanked Ms Chambers for the insight into the work of both organisations.

Decision

The Area Community Planning Group noted the presentation by the Kintyre Link Club and Dochas Care Centre.

(Reference: Presentation by Kintyre Link Club and Dochas Care Centre)

(b) Young Police Volunteers, Campbeltown

The Area Community Planning Group received a presentation from PC Karen Cairns, Youth Engagement Officer on the role carried out within her post and on the Young Police Volunteers Programme run by Police Scotland.

The presentation provided information on various community events and campaigns she had organised within her role and gave an update on the Police Scotland Youth Volunteer Programme and events which had been attended by the volunteers.

There was some discussion around the provision of a PSYV programme in Lochgilphead.

The Chair thanked PC Cairns for her presentation.

Decision

The Area Community Planning Group noted the presentation.

(Reference: Presentation by Youth Engagement Office, Police Scotland)

8. ARGYLL AND BUTE OUTCOME IMPROVEMENT PLAN 2013-2023 - OUTCOME 5 (PEOPLE LIVE ACTIVE, HEALTHIER AND INDEPENDENT LIVES)

(a) Health and Social Care Strategic Plan

Consideration was given to a report which sought feedback from the Area Community Planning Group on their role within health and social care and their response to the Health and Social Care Partnership Community Engagement Process proposals.

Alison McGrory, Health Improvement Principal, NHS Highland presented the report and invited discussion between the Group regarding the best way to form a response.

Decision

The Area Community Planning Group agreed that a further in depth discussion, facilitated by Alison McGrory, would be held via VC between a small number of representatives from the Group in early September with a view to preparing a collective response to the proposals.

(Reference: Report by Associate Director of Public Health, submitted)

(b) Health and Wellbeing Annual Report

The Area Community Planning Group gave consideration to the Health and Wellbeing Annual Report for 2017-18. The report was introduced by Alison McGrory, Health Improvement Principal, NHS Highland and the Group were invited to note the content of the report.

Decision

The Area Community Planning Group noted the content of the Health and Wellbeing Report for 2017-18.

(Reference: Report by Health Improvement Principal, submitted)

9. ARGYLL AND BUTE OUTCOME IMPROVEMENT PLAN 2013-2023 - OUTCOME 6 (PEOPLE LIVE IN STRONGER AND SAFER COMMUNITIES)

(a) Scottish Fire and Rescue - Annual Update

The Area Community Planning Group were given an annual update from

Ronnie Soudan on behalf of the Scottish Fire and Rescue Service (SFRS).

The Group were given statistical information in relation to incidents attended by the service which showed a small rise in incidents overall in comparison to the previous year, a reduction in road traffic collisions and road traffic collision casualties, a reduction in accidental dwelling fires and malicious fires and an increase in automatic fire alarms. The Group were also given information on various campaigns which had been run by SFRS and those which were planned for the future.

Decision

The Area Community Planning Group noted the update by the Scottish Fire and Rescue Service and agreed that the update report be emailed for circulation to members of the Group.

(Reference: Update by Scottish Fire and Rescue Service)

(b) **Police Scotland - Annual Update**

Sergeant Ian McNicol provided the Area Community Planning Group with an update on various initiatives currently being run by Police Scotland.

The Group were updated on the success of the Youth Engagement Officer Post, current local priorities, the work of the Local Authority Liaison Officer, recruitment and retention of staff, special constables, the use of social media to engage with the public and upcoming events.

Decision

The Area Community Planning Group noted the update from Police Scotland.

(Reference: Update from Police Scotland)

(c) **Addiction Services in MAKI**

Lesley MacKay provided the Area Community Planning Group with an update on behalf of Addiction Services in the Mid Argyll, Kintyre and the Islands Area which had been founded in 2008.

She updated the Group on staffing levels, various partners, the process in which referrals are dealt with, the target set for referrals to be assessed and the types of treatment used to help clients.

Some discussion took place on the level of referrals received and the age of those referred to the service.

Decision

The Area Community Planning Group noted the update from Addiction Services in Mid Argyll, Kintyre and the Islands.

(Reference: Update by Addiction Services, MAKI)

(d) **Community Justice Strategy Consultation**

It was noted that no-one was present from Community Justice and therefore the Area Community Planning Group agreed to continue this item to the next meeting.

Under the agenda item of stronger and safer communities, Councillor Sandy Taylor raised the issue of availability of ambulances and response times. He told the Group of a few instances where there had been significant delays due to ambulances travelling long distances. There was some discussion around this and around the access codes for defibrillators, with it being noted that there was an action from the Management Committee for information on defibrillator locations across the area to be collated. It was agreed that the Ambulance Service would be invited to attend the next meeting of the Area Community Planning Group.

10. PARTNERS UPDATE

(a) **Highlands and Islands Enterprise**

The Area Community Planning Group gave consideration to a report submitted by HIE which highlighted their activity across Argyll between April and June 2018.

There was some discussion around what support in terms of economic development could be offered to the East Kintyre area and which organisations would be best placed to deliver this.

Decision

The Area Community Planning Group –

1. Noted the content of the report.
2. Agreed that an action would be highlighted to the Management Committee for them to discuss which partners are best placed to provide support to the East Kintyre area in terms of economic development.

(Reference: Report by HIE, dated July, submitted)

(b) **Scottish Water**

The Area Community Planning Group considered a report submitted by Scottish Water.

There was some discussion around delays in repairing the water main between Campbeltown and Machrihanish; and around finding a permanent solution for the odours at Meadowburn in Campbeltown.

Decision

The Area Community Planning Group –

Noted the content of the report.

Agreed to highlight the issues raised to the Management Committee.

(Reference: Report by Scottish Water, submitted)

Councillor Currie asked about the possibility of looking again at recent developments on Jura and whether there was sufficient infrastructure to support them. It was agreed that this would be discussed at the Community Council and reported back to the next meeting.

Antonia Baird, Community Development Officer, advised of an event being held in Mid Argyll called 66 days which was encouraging people to take up a challenge to make a change in their lives for 66 days between 18 October and 24 December. The launch event would be held in the Community Centre in Lochgilphead on 17 October 2018.

Margaret Wallace of TSI advised of work undertaken within the third sector. Kintyre food bank was issuing on average 29 parcels per month and Tarbert Academy had compiled a recipe book with recipes using the ingredients within the parcel. She informed the Group about Youth Impact, a base which was formed for young people to obtain advice and support and to receive life training and take part in educational activities.

Andy Buntin, Lochgilphead Community Council, updated the Group on events which had taken place in the Lochgilphead area which included the third Celtic Festival which had been held the previous weekend and that 8 of the Scouts had been successful in being chosen to attend camp abroad. Councillor Currie mentioned the Islands Games and asked why Argyll and Bute had not put anyone forward for these; it was agreed that this could be something that could be highlighted to the Management Committee. Councillor Taylor referred to the difficult time surrounding the education report and highlighted that the exam results for Argyll and Bute had been higher than the national average.

Andy Buntin, Lochgilphead Community Council, provided an update on the community transport item which was an action from the last meeting. He advised that he and Antonia Baird had made contact with Craignish Community Council and the local Community to talk about the possible introduction of some community transport which would link the communities of Craignish, Ardfern, Kilmichael and Kilmartin. He advised that it had been agreed that a survey would be issued to these communities to determine how often transport would be required, who would use it and what they would use it for. The survey would be posted on community council websites once completed.

11. DATE OF NEXT MEETING - WEDNESDAY 7TH NOVEMBER 2018 AT 10:00AM IN KILMORY, LOCHGILPHEAD

The date of the next meeting was noted and it was agreed that suggestions for agenda items should be forwarded to the Area Committee Manager. Iain Brodie, East Kintyre Community Council intimated his apologies for the next meeting.

This page is intentionally left blank

ARGYLL AND BUTE COUNCIL**MID ARGYLL, KINTYRE and the
ISLANDS COMMUNITY PLANNING
GROUP****Community Services****November 2018**

Area Update

Report on Activities of WHAM (West Highland Anchorages and Moorings); being a community group that supports the preservation and development of Marine infrastructure, which can support growth.

CONTEXT:

2020 has been designated by the Scottish Government as the Year of Scotland's Coast and Waters. This theme will support Scotland's marine and coastal tourism sector, as well as the marine tourism strategy: "Awakening the Giant" <http://50years.hie.co.uk/media/1350/tourism-marine-tourism-strategy-awakening-the-giant.pdf>

A strategic analysis of the marine infrastructure is below:

<http://scottishtourismalliance.co.uk/uploads/TS2020%20Marine/MarineInfrastructure.pdf>

Several communities in Argyll, including in MAKI, have ambitions to develop their coastal infrastructure, including the laying of visitor moorings, and putting in pontoons. These include Inveraray, Colonsay and Ardrishaig. Campbeltown and Tarbert provide good examples of where upgrading of infrastructure, in partnership with communities, has brought many benefits.

While economic benefits have been identified, there are also important community benefits that could accrue, provided projects are well designed:

- Increase in knowledge – marine habitats are fragile and will be conserved by people who understand them; nautical skills are valued by employers in many sectors.
- Health and wellbeing benefits can come from sporting and physical activity, such as kayaking, windsurfing, coastal rowing, as well as marine wildlife watching and enjoyment of outstanding scenery.
- Preservation of heritage and traditional skills.

WHAM:

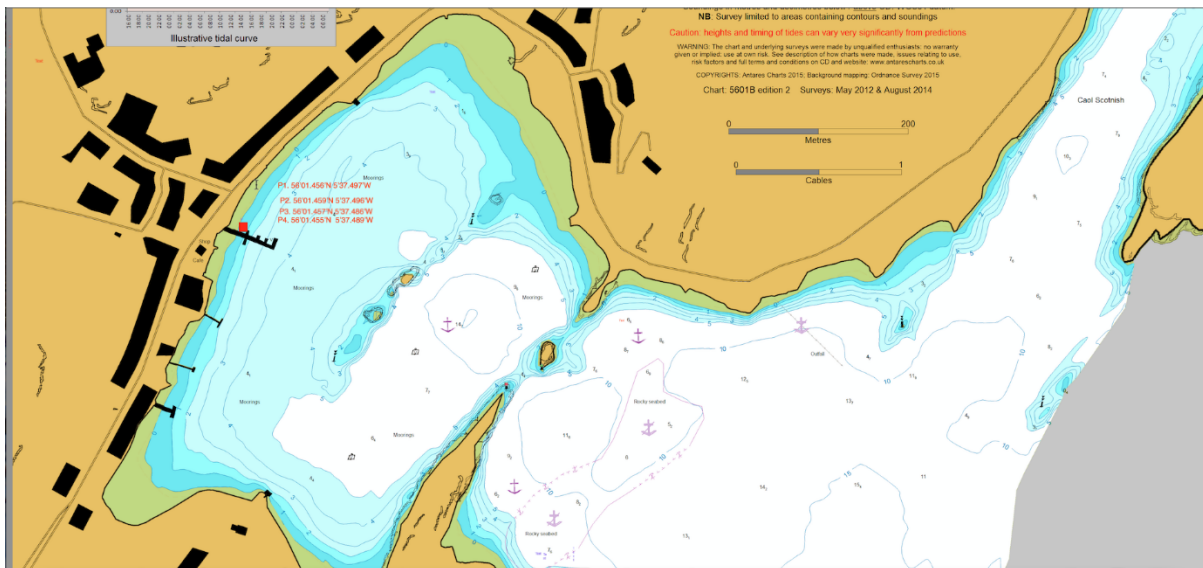
WHAM (West Highland Anchorages and Moorings Association) are a registered charity and exist to promote and protect safe anchorages for west coast mariners. They have 60 corporate members, both privately and community owned, located mainly in Argyll and Bute and Highland Council areas. There are 13 members in the MAKI area, which include community bodies such as:

- Isle of Gigha Heritage Trust
- Crinan Harbour Association
- Craignish Lagoon Moorings Association
- Craignish Boat Club
- Castle Sween Moorings Association
- Campbeltown Moorings Association
- Achnamara Moorings Association
- West Loch Tarbert Moorings Association
- Tayvallich Bay Association
- Minard and Lochgair Moorings Association

WHAM also:

- Lobbies for safe access to secure anchorages at all times.
- Liaises with the regulatory bodies to represent the interests of recreational sailors, including the Crown Estate, Marine Scotland and the Royal Highland Yachting Association.
- And in so doing has respect for the marine environment and responsible and considerate use of the sea.
- They also have useful resources and long experience in setting up a new moorings association and negotiating the regulatory requirements.

LOCAL CASE STUDY:



Tayvallich Bay Association:

Tayvallich Bay Association was formed to preserve and develop, for the benefit of the community, the local assets of the piers, jetties and natural harbour.

They now manage 3 of the 4 piers in the village for the benefit of a wide variety of stakeholders, in a sustainable way.

Jura Passenger Ferry 2008 – 2017 – summary

jurapassengerferry.com

Background in Summary

- 2005 Community questionnaire showed 80% of the community requesting an independent study into the feasibility of a direct link between Jura and the mainland (last link was 1974)
- 2006 Business case prepared showing suitable destinations
- 2007 Marketing survey carried out within the catchment area using independent business and Visit Scotland. 3-week feasibility trial carried out.
- 2008 Advertising for expressions of interest and tenders sent out.
- 2009 First 3-year pilot service carried out as well as major developments to improve infrastructure at both ends put in place (pontoons, car parking, connecting public transport services. Average 4.8 passenger numbers carried (PNC).
- 2010 Passenger numbers steadily increasing – revenue subsidy secured for a further 2 years. 4.8 PNC
- 2012-2019 – Revenue subsidy support continued year on year from Transport Scotland and Argyll & Bute Council. Passenger numbers levelling out. Average 5.4 PNC.*

Social and Economic Benefit

- 55 min crossing (using alternative route to mainland takes approx. 4hr – (Craighouse – Islay – Kennacraig). Colin McLean, HIE Development Manager said *'The project aims to boost the level of economic activity and visitor spend on Jura as well as enhance the sustainability of local businesses'*. * see attached testimonials.
- Councillor Duncan MacIntyre, Argyll and Bute Council roads and transportation spokesperson said *'These improvements at Craighouse are to be welcomed with open-arms. The new ferry service will not only enable people to visit this remote and beautiful island, but it will also enable the residents of Jura easy access to Lochilphead, Oban, Glasgow and beyond thanks to good connections with local bus services'*
- Friends and relatives are finding the service beneficial, removing the feeling of isolation which improves social wellbeing. It would now be difficult to imagine what life would be like without the ferry so embedded in the way of life for the Jura community. Tayvallich was never so isolated, but there have always been links between these two communities, the ferry makes it easier to meet and attend other functions for the good of both communities.
- The economy of the island has seen a considerable uplift, particularly for the Community Shop, Hotel, Antlers and even the Distillery.
- The service has also provided the community with other requests such as;
 1. Jura's younger generation use the service to return home at the weekends from mainland college and universities
 2. Allows access to services at Lochgilphead that are difficult do get on Islay – dental appointments and ear, nose and throat being the most popular
 3. Access to emergency speech and language therapy swallowing assessment if someone had a stroke
 4. Blood transportation when flights and other services are disrupted
 5. Freight and emergency deliveries, especially on Sundays
 6. Business appointments with stakeholders and government bodies who cannot afford the time to travel overnight
 7. A means of travel when other services are disrupted due to breakdown or bad weather
 8. and knowing that a direct link is there between Jura and the mainland.

The feasibility study carried out in 2005 by Steer Davies Gleave na.steerdaviesgleave.com set out the following objectives;

Vision

'To enhance the viability of a sustainable community on Jura'

Outcome objectives

- To increase Jura residents' interaction with the mainland
- To increase economic activity on Jura
- To maintain the unspoilt environment of Jura

Output objectives

- To enhance the speed and flexibility and reduce the cost of resident trips to the mainland, preferably by car
 - To facilitate an increase in tourist expenditure by enabling Jura to be easier for tourists to visit
 - To minimise the detrimental effects of traffic, infrastructure or other changes on the environment of Jura
-
- In conclusion the service has met all of the above objectives with the exception of a direct car link. Not only that, it has also demonstrated further positive impact to the community both on Jura and Tayvallich. In terms of return on investment, the marketing survey carried out in 2008 predicted a return of £3 for every £1 spent, although we have not carried out a recent survey to gauge this. This does not take into account the benefits across the water at Tayvallich nor the indirect benefits the service has as a mainland link which removes the feeling of isolation that people may have. We believe that further investment and support for this service can only improve this transport link and in turn improve the well-being and life to the island.

Future proofing and lessons learned

We are approaching the end of our eighth season where we have identified, in summary, the following;

1. The current vessel, we believe, is not fit for purpose in terms of sustainability and viability – a more commercially built vessel is possibly required for this journey (this has been identified due to several breakdowns and discussions with the operator). We will be looking into other short sea journey services to compare and consider. This could be a simple alteration of engines.
2. Service contract requires a minimum of 3 years – in order to attract a viable tender as 2009-2011.
3. A 3-5-year contract would secure a more sustainable service, reduce management costs and allow the service to be appropriately introduced and marketed into the local area transport and tourism network.
4. In terms of the economy, the season is changing and becoming broader. We may consider a 7/8 month contract which could increase passenger revenue – this could also incorporate a shoulder season in quieter months. Discussions with transport advisors is required.
5. The Jura Development Trust is a volunteer organisation and therefore, as expected, spread thin in terms of man hours. Were we to succeed in a new contract term, we need to build in a small management fee to assist with the operation going forward – however, again, with a 3-5 year contract the time and hours spent on securing support and revenue funding would be reduced.

Passenger numbers carried in summary 2014-2017

	2014	2015	2016	2017	2018
March	43	-	100	13	60
April	260	240	277	406	364
May	354	491	557	579	695
June	231	305	401	464	526
July	455	454	591	564	651
August	411	456	589	654	691
September	297	455	435	462	498
	2,051	2,401	2,950	3,006	3,485

Passenger numbers for 2018 will be incorporated end Oct 20

Testimonials

Dr Abby Beastall – Jura Medical Practice

'Benefits of the passenger ferry to the community from a health point of view are the access to psychological therapy at Lochgilphead - particularly the Child and Adolescent service which does not visit Islay. Psychological/psychiatric services on Islay are hugely overstretched and looking to the future access directly to Lochgilphead may be important for Jura patients. We can't get from Jura. Also there is no optician now on Islay and very limited and inadequate dental services so access to these services via the passenger ferry will become more and more important as it is not possible to get to Lochgilphead/Tarbet and back in a day via CalMac. The passenger ferry has also been used to transport doctors to injured/ill patients on yachts in the bay at Craighouse.'

Chris Lamb – Manager of the Jura Community Shop

'I would like to emphasise the great benefit and positive impact that the passenger ferry has on the Jura Community and the Shop. The regular daily arrivals of holiday makers, tourists and business people are a huge asset to Jura bringing business and trade and increasing takings over the summer months. The quick journey and accessibility to and from the mainland enables locals also to come and go to the mainland with ease, especially now the buses link up with the passenger ferry timetable. The huge volumes of people that arrive on Jura at special times over the summer season is amazing! Such times being the Fell Race, Sport's Day, Half Marathon, Regatta and the Jura Music Festival all of which would not be as successful if people were not able to get to Jura so easily. The service enables people to travel light which in turn encourages people to buy provisions etc. once they arrive here - again boosting the takings over the summer as they stock up on arrival and throughout their stay on Jura. Nicol is always friendly and accommodating, providing an excellent safe and professional service. When the service stops over the winter we really miss the regular sightings in the bay and arrival of the boat, looking forward to the start of the season at Easter when the island 'opens' once again for visitors and the busy times ahead.'

Christine Fairman – local resident and nurse

'I used the service every month when I worked in Balloch, journey time 2.45hrs, compared to 6hrs with CalMac. It was also cheaper, as I did not need to buy a meal, which you do when travelling with CalMac. When you are down the village when the ferry comes in, often there are 10 people coming off the ferry, on business, day trips, visiting relatives, can we afford to lose that business? I think if we lost the passenger service it would be a huge step backwards for Jura.

My daughter is coming over in August, she will leave Balloch at 8am and be here by 11am, amazing. She has a full extra day as part of her holiday. If she travelled by CalMac, she would not be here until 4pm, having travelled all day, which is a waste of a day. Family tend to visit more frequently using the passenger ferry, which is very important living here. Long live the Passenger Ferry.'

Supporting documents available on request;

- i. *Direct Ferry Link – Feasibility Study 2005 – produced by Steer Davies Gleave*
- ii. *A Review of the 3-year pilot (2009-2011)– Social, Economic and Environmental Impacts – produced by Slainte Ltd*



The Isle of Jura Development Trust would like to thank
Transport Scotland and Argyll & Bute Council for their support.

juradevelopmenttrust.co.uk • Service Point • Craighouse • Isle of Jura • 01496 820168

MAKI AREA COMMUNITY PLANNING GROUP**NOVEMBER 2018****7(a) ISLAY HOUSING NEEDS**

1.0 EXECUTIVE SUMMARY

1.1 Argyll and Bute Council is the Strategic Housing Authority for the local authority area. As such the Council must carry out a Housing Need and Demand Assessment (HNDA) every 5 years. The HNDA is a formal process which is prescribed by technical guidance issued by the Scottish Government. The HNDA is calculated by adding together the backlog (existing need) and newly forming (future) demand and taking away the existing and anticipated housing supply. The resultant deficit or surplus equates to the requirement for new build housing. The HNDA is agreed with the Scottish Government and is used to target affordable housing investment in the local authority which is set out in the Strategic Housing Investment Plan (SHIP).

1.2 As well as addressing unmet local housing need and contributing to national targets, the SHIP generates additional investment in the local economy, supporting additional jobs including new apprenticeships in the construction sector and associated labour market; it stimulates community regeneration and sustainability; it helps to attract and retain residents and employees for local businesses; it encourages movement within, and more effective operation of, the local housing system; it also contributes to improving general health and well-being; and more pragmatically the new homes will also generate additional Council tax revenue.

1.3 RECOMMENDATION

It is recommended that the MAKI Community Planning Group

- I. Consider the content of this report.

7(a) ISLAY HOUSING NEEDS

2.0 INTRODUCTION

- 2.1 This paper details the delivery of affordable housing and proposed housing delivery on Islay through the SHIP in the current Local Housing Strategy (LHS) period 2016-2021.
- 2.2 This paper will explain the HNDA process and confirm when work on the next HNDA will begin.

3.0 RECOMMENDATIONS

- 3.1 It is recommended that the MAKI Community Planning Group:
- I. Consider the content of the report

4.0 DETAIL

- 4.1 The Local Housing Strategy (LHS) sets out the strategic policy approach of the council and its partners to delivering high quality housing and related services across all tenures to meet identified need in the area. SHIPs are directly informed by the LHS and its policies and are developed in consultation with key stakeholders. Therefore, the SHIP is operational and not a policy document.
- 4.2 The core purpose of the SHIP remains to set out strategic investment priorities for affordable housing over a five year period to achieve the outcomes contained in the LHS. The plan reinforces the council as the strategic housing authority; the importance of the outcomes and targets set out in the LHS; and informs Scottish Government investment decisions.
- 4.3 The SHIP should therefore
- Set out investment priorities for affordable housing
 - Demonstrate how these will be delivered
 - Identify the resources required to deliver these priorities
 - Enable the involvement of key partners

The content of the SHIP also includes the following;

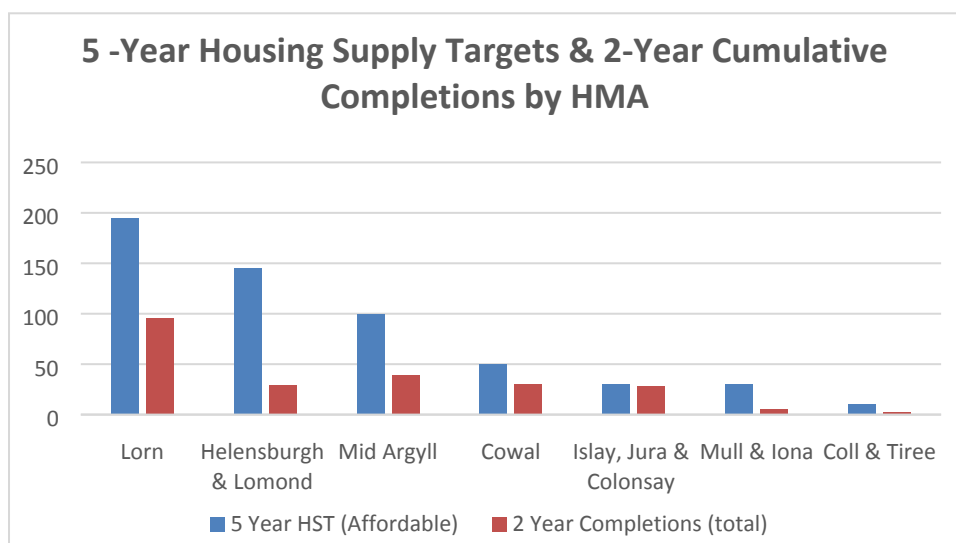
- That the priorities listed are consistent with the Local Housing Strategy (LHS) and any subsequent updates;
- A summary of the methodology used to prioritise projects;
- That beyond securing funding, any other development constraints will have been resolved by the estimated site start date;

- The level of consultation undertaken with RSLs and other stakeholders in developing the SHIP;
- That the projects will maximise the opportunities for energy efficiency and reduction of fuel poverty.

4.4 The table below details the number affordable housing units which have been delivered on Islay since the start of the current LHS in 2016

Location	Registered Social Landlord	Number of Units
Port Ellen	West Highland Housing Association	18
Bowmore	Argyll Community Housing Association	30

The graphic below shows the progress made towards the Housing Need and Demands identified broken down by Housing Market Area.



We have met the 5 year Affordable Housing Target for the Islay and Jura Housing Market Area in the first 2 years of the SHIP but the Council recognises that there is still a need and demand for more affordable housing on Islay. The table below shows the proposed affordable housing developments on Islay in the SHIP which are due for completion by March 2021.

Location	Registered Social Landlord	Number of Units
Port Ellen	West Highland Housing Association	8
Bowmore	Argyll Community Housing Association	20
Keills	Argyll Community Housing Association	4

- 4.5 The current HNDA was completed in 2015/16 and covers the period to 2021, however this is a continuous, cyclical process and the council aims to complete a comprehensive review and update across all Housing Market Areas(HMAs) in 2019, which will then underpin the development of the next LHS during 2020, for implementation from 2021.

While the legal/Scottish Government HNDA framework applies primarily to local authority and higher level housing market areas, the

council re

5.0 CONCLUSION

- 5.1 The Council is committed to working with all partners including communities in order that Housing Need and Demand can be assessed accurately and appropriate affordable housing solutions can be delivered across the local authority area.

6.0 IMPLICATIONS

- 6.1 **Policy:** The contents of the paper consistent with current Council policy, including the revised policy in respect of the use of Strategic Housing Fund monies. The SHIP supports the Local Housing Strategy vision and outcomes which are directly aligned with the overarching objectives of the Single Outcome Agreement, in particular SOA Outcome 2 – we have infrastructure that supports sustainable growth.
- 6.2 **Financial:** The SHIP is based on the Resource Planning Assumptions provided by the Scottish Government; the Strategic Housing Fund and RSL private finance. There will be an ongoing requirement to retain and target SHF resources to support the proposed programme.
- 6.3 **Legal:** The Housing Need and Demand Assessment process will be carried out in line with the Council's statutory duties.
- 6.4 **HR:** None
- 6.5 **Equalities/Fairer Scotland Duty:** The content of the paper is consistent with aims and objectives set out in the Local Housing Strategy, which is subject to an EQIA.
- 6.6 **Risk:** Risk assessment is an integral part of each development which is informed by the HNDA process. Failure to forward plan judiciously and to programme development in line with identified

needs could result in over supply; generating imbalances in the local housing market, and creating risks for RSL's and the management of their existing stock, with consequent adverse effects on local neighbourhoods and communities.

- 6.7 **Customer Service:** The proposals will deliver increased access to a range of suitable, affordable housing options.

Douglas Whyte
Team Lead – Housing Strategy

November 2018

For further information contact:

Douglas Whyte
Team Lead – Housing Strategy

E-mail: douglas.whyte@argyll-bute.gov.uk
Tel: 01546 604 785

Allan Brandie
Research and Development Officer

E-mail: allan.brandie@argyll-bute.gov.uk
01369 708 679

This page is intentionally left blank

ARGYLL AND BUTE COUNCIL

**MID ARGYLL, KINTYRE and the
ISLANDS COMMUNITY PLANNING
GROUP**

Development and Infrastructure

November 2018

Area Update

1.0 EXECUTIVE SUMMARY

1.1 This report provides an update on the various digital infrastructure projects including:

- Next Generation Access
 - Broadband Understanding
 - Programme so far
 - Digital Communities
 - Reaching 100% (R100)
- Mobile Communications
 - Commercial upgrades
 - Other activities

RECOMMENDATIONS

It is recommended that the Mid Argyll Kintyre and Islay Community Planning Group

1. Note the content of this report

ARGYLL AND BUTE COUNCIL

MID ARGYLL, KINTYRE and the
ISLANDS COMMUNITY PLANNING
GROUP

Development and Infrastructure

November 2018

Area Update

2.0 INTRODUCTION

2.1 Work has continued on a number of programmes which aim to improve the digital infrastructure across Argyll. This report provides an update on the various projects within the Mid Argyll, Kintyre and Islay area.

3.0 RECOMMENDATIONS

3.1 It is recommended that the Mid Argyll, Kintyre and Islay Community Planning Group
1. Note the content of this report.

4.0 DETAIL

The work being undertaken in relation to digital infrastructure relates to broadband or mobile communications.

4.1 Broadband Understanding

Broadband or ADSL (Asymmetric Digital Subscriber Line) - This is a digital telephone line able to provide broadband, this uses the old copper network from exchange to premise. In some cases lines go from the exchange direct to the premise Exchange only Lines (EOL) in other cases they enter a road side cabinet known as a Primary Connection Point (PCP) prior to premises distribution. ADSL, has several variances using the same technology but comes in with different speeds.

Broadband speeds offered over a standard ADSL connection is up to 8Mbps downstream, 446Kbps (0.5 Mbps) upstream. ADSL2+ is the latest version and can offer speeds of up to 24Mbps downstream, 1.3Mbps upstream.

4.2 Fibre to the Cabinet (FTTC) - This is the technology which Openreach primarily used to extend the reach of Superfast Broadband as part of the BDUK contracts. This is a hybrid Fibre solution which still uses the old copper network. VDSL degrades rapidly over copper hence why you have to be within 2km of the upgraded cabinet to get any uplift in speed. This is relatively quick win for BT and connects a number of premises giving access to upgrade to Hybrid Fibre SFB. It is done by connecting a PCP to a newly installed Digital Subscriber Line Access Multiplexer (DSLAM) which connects to the exchange via Fibre, thus shortening the copper

line length the broadband signal has to travel over the old network thus increasing speeds. This is Very High Speed Digital Subscriber Line (VDSL). FTTC can offer speeds of up to 80Mbps downstream, 20Mbps upstream but is very distance related.

- 4.3 Fibre to the Premise/Home (FTTP/H) - This is the gold standard in broadband connectivity and what is classed as a truly future proof network with Gigabit 1000Mbps capabilities. The UK Government has set a target of 2033 for the whole of the UK being full fibre, which will result in the replacement of the old copper Public Switch Telephone Network (PSTN). BT are eager to have the PSTN switched off sooner rather than later due to the high associated cost of copper network maintenance. They are currently maintaining two networks the old outdated copper network and building the new fibre network, the sooner they can turn off the copper the more they have to invest in the new network.
- 4.4 Superfast Broadband (SFB) – There are currently two standards to SFB speeds >24Mbps (UK) and >30Mbps (EU).
When the initial BDUK contracts were signed the UK Government defined SFB as speeds >24Mbps. Subsequently the EU decide that Superfast should be >30Mbps. So the initial contract speed criteria is set as the lower. Any subsequent state aid funded projects should adhere to the higher value.
- 4.5 Ultrafast Broadband (UFB) – Some make the generalisation that Ultrafast is speeds >100Mbps however Ofcom have redefined this as speeds >300Mbps. There are several means of currently receiving UFB with some still claiming that UFB is >100Mbps. 'G-Fast' is provide by BT and can provide ultrafast broadband over the copper network, however it is currently being suggested that this is being scaled back as Openreach are concentrating on their Full Fibre programme. Cable or DOCSIS (Data Over Cable Standard Interface Specification) this is used for provision of Telephone, TV and Broadband services.
- 4.6 Full fibre is only the real option for accessing this UFB in a rural context. DOCSIS is a purely commercial product from Virgin Media and will not see the commercial investment being made in rural areas. G-Fast again is a commercial product from BT but also relies on the copper network but only on very short lines lengths so is not suitable for rural locations.
- 4.7 There are currently several players installing full fibre networks across the UK, there is Openreach of course but there are some AltNets doing the same like Hyperoptic, Gigaclear and Cityfibre.
- 4.8 Alternative Solutions – There are other solutions to providing broadband which are not land based, you have Fixed Wireless Broadband, Mobile Broadband, TV White Space and Satellite. These can all provide you with SFB but they do have their constraints, technological restrictions on speed, signal contention, spectrum availability, latency, data usage limitations and cost. They all have their own place and for some this might be the only solution for the foreseeable future.
- 4.9 4G Home Broadband – This is a relatively easy solution in remote areas as long as you have a 4G signal, Vodafone and EE both provide this as a solution. You can

find out which provider is best for you by checking the Ofcom website <https://checker.ofcom.org.uk/mobile-coverage> and inserting your postcode. With EE having launched its 4GEE Home Router some time ago, this is a small 4G router with built in antenna that can be simply posted to people and if needed an engineer visit at £100 can be arranged to install an external 4G antenna on a property to boost the signal. One problem in terms of replacing a fixed line service with 4G solutions is often the limited usage allowances but with up to 500 GB plans now available EE may have largely removed that obstacle even if the price is a bit more personal shopper rather than pound store.

- 500GB is £100/m, equivalent to 20p per GB
- 300GB is £80/m, equivalent to 26.6p per GB
- 200GB is £60/m, equivalent to 30p per GB
- 100GB is £45/m, equivalent to 45p per GB
- 50GB is £35/m, equivalent to 70p per GB

All the plans are based on an 18 month contract, but you can pay £100 upfront and have the freedom of a 30 day contract.

The £100 price tag is still well above what would be considered a reasonable cost but is still a lot lower than the £1/GB equation that has lasted for some years, and if you are otherwise stuck with sub 2 Mbps ADSL it might be tempting even on a temporary basis until another solution is provided. However it must be stressed that your provider must have available backhaul at its mast location.

4.10 Ofcom have outlined that in 2017 the average household was consuming 190GB of data every month up from 132GB the previous year this is quite a lot of data. For example in appendix 1, 2 and 3. This is an average modern day household of two adults and three children on fibre max averaging 25-50 Mbps (Wi-Fi) (70Mbps+ wired) using SkyQ (with minibox), Amazon fire stick, Netflix, a smart TV (internet connected), PS4 (online gaming) 5 smartphones, an iPad and music streaming (Apple Music, Spotify and Amazon Music). This shows that the previous month data usage was 66.21GB download and 4.35GB upload. Albeit box sets were download in SD for storage purposes. For example watching TV shows or movies on Netflix uses about 1 GB of data per hour for each stream of standard definition video, and up to 3 GB per hour for each stream of HD video. Downloading and streaming consume a similar amount of data. This has gone as high as 245GB download and 41GB upload, but Ofcom outline that where available data usage in rural areas is generally higher.

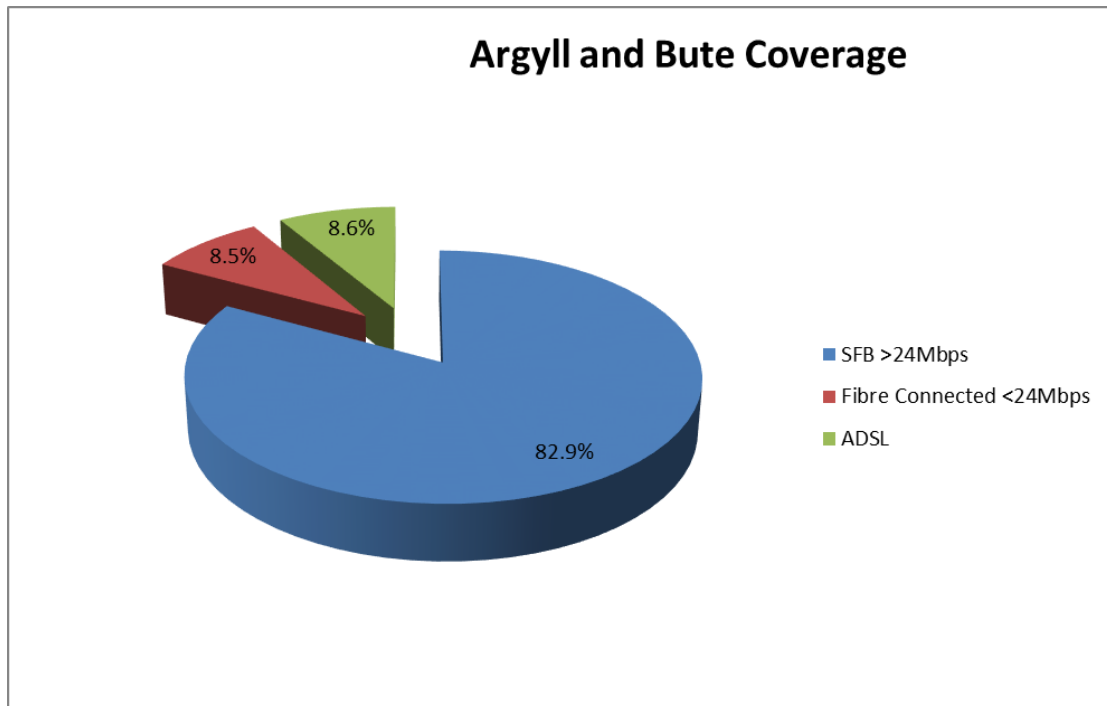
4.11 Technology is always striving for more, pushing the boundaries. Current solutions are regularly being improved and new ones being developed. The next big push is going to be 5G and the Internet of Things (IoT). It is expected that Wi-Fi will be an intrinsic part of the upcoming 5G rollout which will ultimately rely on converged next generation networks split between licenced and unlicensed spectrum.

4.12 **Programme Update**

Work has continued on building the new infrastructure network to support next generation access. Whilst the initial contract was supposed to be completed Dec17 this will now see further cabinets and connections made due to efficiency savings and further Gainshare money being made available. Currently telephone

exchanges will continue to provide a service in relation to telephone calls only some exchanges will handle next generation broadband services, new access cables running from these “headend” exchanges directly to new communication cabinets within communities will ensure that the superfast speeds reach the local cabinets. Several more exchanges have been upgrade as part of the Digital Scotland programme than initially expected with more Points of Presence (PoP) being established. A PoP is where the main backhaul into the network is established to create internet connections.

- 4.13 As of the 30th September across Argyll and Bute which is part of both programmes HI and RoS 91.4% of premises are connected to the fibre network of this 82.9% have access to SFB resulting in 8.6% are still ADSL only.



4.14 During 2018, we have seen further new connections extending the reach of Next Generation Access to premises in the Mid Argyll, Kintyre and Islay area many for the first time. Work continues in many of these locations to extend the fibre services to as many premises as possible within the budget of the programme. A major part of this additional funding will be addressing the issue of Long Lines which is common across rural areas. This is basically where a premise is connected to a Fibre Cabinet but is too far away to benefit from an uplift in speed.

4.15 It must be highlighted that once the new fibre cabinets are live, customers who want next generation access must order the upgraded hybrid fibre service from their internet service provider. Members of the public can check whether they are able to order a next generation service at <https://www.scotlandsuperfast.com/> If they are not able to order a next generation broadband service they will be given an indication of whether the service is likely to be available within their exchange area and if so when the first premises are expected to be connected.

4.16 Highlands and Islands Programme

The Highlands and Islands (HI) programme in Argyll is currently expected to connect 91% of premises to the fibre network with 85% having access to SFB at the end of the current phase when taken with the commercial rollout.

4.17 The first live premises through the HI programme in Mid Argyll, Kintyre and Islay were made during the late 2015 early 2016 when premises in the Lochgilphead and Campbeltown exchanges went live. Further hybrid fibre and connections have since been made available in most exchange areas across Mid Argyll, Kintyre and Islay, many of these areas have received a fibre service ahead of the initial timescales within the first rollout plans. Unfortunately not all exchange area have some upgrades. There has been some unforeseen technical difficulties in some exchange areas which has seen major delays and caused distress to expected customers. The number of Cabinets at exchange level can be seen in Appendix 4

4.18 As a result of additional funds being made available to the initial phase 2 more exchanges will be seeing some activity. Kilkennie exchanges will see work commence later this year into early next year. Due to the current change in direction, under the current contract BT are establishing which cabinets that have still to be installed can be flipped from Cabinet to Premise (CtoP). Which will result in possibly some late premises getting Full Fibre rather than Hybrid. However this is done on a best value basis.

4.19 Discussions into the lack of suitable broadband from Tayinloan exchange one of the few exchange areas in Argyll and Bute not to see coverage in the initial fibre rollout which covers Gigha has led to alternative solutions being sought. The community in Gigha have entered talks with Stuart Craine (BoB Broadband) into potentially providing a wireless solution. However funding is an issue. It was highlighted that DS do have a better broadband voucher of up to £350 per premise. However this has caveats, you must have a current broadband connection of less than 2Mbps to be eligible. Checks were made to see if the vouchers could be pooled? However it has been conveyed that the pooling of vouchers cannot be used for infrastructure build. Any such infrastructure must be at the suppliers' expense or alternative funding arrangements in place. Also the supplier must be registered with DS to access the vouchers. Further discussions are going to be had around on this subject. A second solution has also been suggested is to look at 4G broadband. Information has been sought from MNO with only EE responding outlining that the current mast setup cannot support home broadband at the moment. Currently the mast uses a satellite backhaul solution, however mast upgrades are scheduled for Dec to a microwave dish-link. Discussions on this are currently ongoing.

4.20 Work is continuing across Mid Argyll, Kintyre and Islay with the initial contract that was due to end Dec17 however a contract extension has been given due to additional funds being made available, this will see continued deployment during 2019 where it will align with the R100 programme.

4.21 Digital Communities

HIE announced that the CBS team was being reduced and rebranded as the 'Digital Communities' team. The team continues to provide support for the existing CBS

projects while the R100 procurement process is complete.

- 4.22 As outlined in the Audit Scotland Report all CBS projects were approached by the R100 team whilst drawing up the R100 intervention area, all but KCB decided to await the R100 rather than assume community risk. The R100 team are following KCB closely. As the programme name indicates 100%! If KCB fails it will have to be re-scoped back into R100.

4.23 **Reaching 100% of Premises with access to SFB >30Mbps- (R100)**

The R100 programme is a SG commitment to achieving 100% of business and residential premises have access to SFB of >30Mbps by the end of financial year 2021 (Mar 2022). The R100 has split Scotland into 3 Lots North (Lot1), Central (Lot2) and South (Lot3). The R100 procurement is well underway, there was initially 4 bidders for all 3 lots however 1 has removed themselves from the procurement process. Currently the programme team are undergoing competitive dialogue with the remaining 3 preferred bidders. Most of Argyll and Bute is in Lot1 which has been allocated £384M of the £600M fund committed by the SG. The procurement exercise is expected to be finalised late December 2018 early 2019. Very little information will be available during this period due to commercial sensitivities. What I can say is that some the tender has been drawn up with 11 mandated areas, this requires the successful bidder to make 25% of premises in that area full fibre. All of these mandated areas are in the North Lot. There are currently around 376,000 without access to SFB, 165,000 were removed due to ongoing contracts and commercial upgrades, this leaves 211,000. 30,000 are removed as they are currently classes as urban and should be connected through the commercial process, the SG have indicated that public money should not be spent where it is commercially viable. 34,000 already have 24Mbps speeds and should get to 30Mbps through technological upgrades over the next 3 years leaving the 147,000 which is the initial R100 intervention area. Within Argyll and Bute there are 10,166 premise in scope NGA white with 9,182 in the North Lot. It must be highlighted that this initial tranche of funding is unlikely to connect all premises. To combat this Digital Scotland are planning aligned interventions to run in association with the initial R100 contract. It is still not clear how the UK Governments Broadband Universal Service Obligation (USO) will align with the R100 or how this is going to be funded.

- 4.24 **Universal Service Obligation (USO)** – Ofcom has revealed that only BT (Openreach), KCOM, Hyperoptic, Quickline and Broadway Partners have expressed a formal interest in becoming suppliers for the new Universal Service Obligation (USO), which from 2020 will make it possible for anybody in a slow speed area to request a broadband speed of at least 10Mbps.

The USO is largely expected to focus on catering for the final 1-2% of homes and businesses across the United Kingdom, which effectively reflects those that are unlikely to be served by a “superfast broadband” (24Mbps+) network come 2020

10Mbps USO Specification

- A minimum download “sync” speed of at least 10Mbps.
- A minimum upload “sync” speed of at least 1Mbps.
- A medium response time with end to end latency of no more than 200ms for

speech applications.

- A minimum data allowance of 100GB.
- A technology neutrality design (can be delivered via a mix of fibre based and wireless solutions).

4.25 Audit Scotland have release their Superfast Broadband for Scotland Report Sept18 in brief they have outlined that the Scottish Government met its target of providing access to fibre broadband to 95% of premises in Scotland by Dec17. They also highlight that the SG established its R100 with a funding commitment of £600M across the 3Lots and that this is to provide 147 000 premises with SFB however they also state that further funding may be required if this target is to be realised. They have some key recommendations for example, the SG publish clear timescales for R100 by summer 2019 and communicate effectively with stakeholders so rural communities know what to expect and to take account of lessons learned from CBS and the planned assessment of the benefits from the two contracts when developing the 'aligned interventions'.

Mobile Communications

4.26 In April Ofcom finalised precisely how much extra mobile spectrum has been won in the recent auction of the 4G friendly 2.3GHz and future 5G targeted 3.4GHz radio spectrum bands, which saw EE (BT), O2, Three UK and Vodafone spend a total of £1.37bn. For some additional reading if you are interested please see appendix 5. This outlines some key points about spectrum allocation and to help understand mobile technology, how it works in some places and on some networks and not others. This is all down to spectrum allocation and individual technologies used and what handset and tariff you are on. Yes the handset and tariff that that you have is a major factor, only modern 4G capable handsets will benefit and very often pay as you go sims will not get access to the same frequencies. EE currently operate mobile coverage over 3 frequency bands depending on where you are located to provide a service. Due to the frequency 4G data coverage can be available were 2G calling is not which allows your phone to make calls over the internet this is known as VoLTE calling, similar to that also used in your phones Wi-Fi calling feature which uses your home broadband rather than mobile data network for making and receiving calls Voice over Internet Protocol (VoIP). Wi-Fi calling is a very good feature in modern handsets. Indoor coverage is always going to be worse as signal gets blocked/reduced when trying to penetrate buildings.

4.27 Ofcom have also stated that the picture varies across operators and across nations. As a result, the ongoing roll-out of 4G services has led to improvements, the mobile coverage is still worse in Northern Ireland Scotland and Wales. This is unsatisfactory and more needs to be done to improve coverage. This geographic coverage varies greatly with 81% in England, 76% in Northern Ireland, 56% in Wales and only 36% in Scotland. This is mainly down to population densities with England having 395 people /km² , Northern Ireland 133 people /km² , Wales 148 people /km² and Scotland 65 people /km² . Hence the reason behind differing licence obligation proposals per nation.

4.28 This population density is one of the reasons why the Scottish Government has started the 4G infill programme which has established around 100 locations that will require public funding to provide 4G coverage in rural Scotland the initial

procurement has seen the £25M contract awarded to WHP telecoms. 3 of the initial 16 identified mast locations are in Argyll and Bute with one at Southend and one at Crinan Ferry. Initial drawings have been passed to a planning ATL for discussion prior to a full planning application. However as with everything there are caveats. One is that there must be no 4G service from any operator planned for the next 2 years, this is to adhere to State Aid Regulations. WHP have been contracted to design and build along with securing the relevant planning consents and wayleaves, the caveat is that any mast will only progress to build once it has secured a Mobile Network Operator (MNO) as an anchor tenant. This is to ensure that there are not a load of metal skeletons dotted around serving no purpose and wasting public funds. The SG anticipates that funding should support a total 70 S4GI masts with a further 11 in Argyll and Bute. However even securing an anchor tenant in some of these locations could be extremely challenging due to the number of potential connections to fund the ongoing costs which are to be met by the tenant. To combat this Scottish Futures Trust are looking at other means to interest the MNO

4.29 Home Office Emergency Service Network Extended Area Sites (ESNEAS).

This is another network build which is currently going through the process. This is initially to support the ESN in very remote areas. There are a number of these sites appearing across the Mid Argyll, Kintyre and Islay area. Principally around South Kintyre and the Islands the last being on the Hilltop adjacent to the A83 at Tangy initially this will only provide ESN coverage but when a fibre link is achieved it will provide commercial 4G coverage on the EE network with the potential to support another operator. Initially this was intended to be a large lattice tower which would dominate the horizon for several miles when travelling from Campbeltown. The planning department had major concerns. Negotiations with the Home Office and the telecoms consultants were undertaken and concluded in a less obtrusive Mono pole being approved. This new less obtrusive design is slightly taller than the original which will provide greater coverage into the road cutting.

5.0 CONCLUSION

- 5.1 Digital connectivity across the Mid Argyll, Kintyre and Islay area is constantly improving with the continuation of the fibre rollout programmes and the upcoming R100. Digital Scotland has outlined that it is possible that further funds may be required to meet the government's commitment to the R100 and that further procurements may be required to achieve this milestone target of 100%. Rollout is expected to continue during 2019 when it will align with the R100 with coverage extending across more of the rural exchange areas. Progress on mobile coverage is although slow, we continue to press for improved coverage through both commercial and publically funded programmes.

6.0 IMPLICATIONS

- 6.1 Policy – Outcome Improvement Plan 2013-2023 - Outcome 2 (We Have Infrastructure That Supports Sustainable Growth)
- 6.2 Financial – Across Scotland funding of £600m has been committed to the R100 programme by the Scottish Government. No direct financial implications to the Council at the present time.
- 6.3 Legal – none.
- 6.4 HR – None.
- 6.5 Equalities – the differing nature of the deployment of new technology has the potential to lead to inequalities in terms of access to digital services including those which support business and personal development.
- 6.6 Risk – there is an overall risk that the economic benefits arising from modern digital infrastructure are not fully realised. There are risks that those areas which do not benefit from digital infrastructure could become less attractive locations within which to live and work which could have implications in relation to the OIP objective of growing the population. The various programmes are reliant on new technology and innovation which is developing rapidly. Some projects are reliant on commercial operator decisions to invest whilst grant funding is necessary for many aspects of digital infrastructure improvement in Argyll. These aspects all create a level of uncertainty around the extent of infrastructure improvements.
- 6.7 Customer Service – improvements in broadband and mobile technology improve the opportunities for digital based customer services.

Appendices

- 1 Data Summary
- 2 Daily Data Usage
- 3 Usage Graph
- 4 Exchange/Cabinet overview
- 5 Technical Interest

Executive Director of Development Infrastructure: - Pippa Milne

Council Leader and Policy lead for Economic Development: - Aileen Morton

For further information contact: Iain MacInnes, Digital Liaison Officer

(01546 604647, ian.macinnnes@argyll-bute.gov.uk)

Appendix 1

SUMMARY

Here you will find a summary of your broadband data usage and you can find more information by clicking the links below.

Monthly broadband data allowance	Unlimited Data
Total data allowance	Unlimited Data
Download data usage	66.21GB
Upload data usage	4.35GB

[Broadband data usage since your last bill >](#)

[View your broadband data usage by activity >](#)

[View last month's broadband data usage >](#)

[BACK](#)

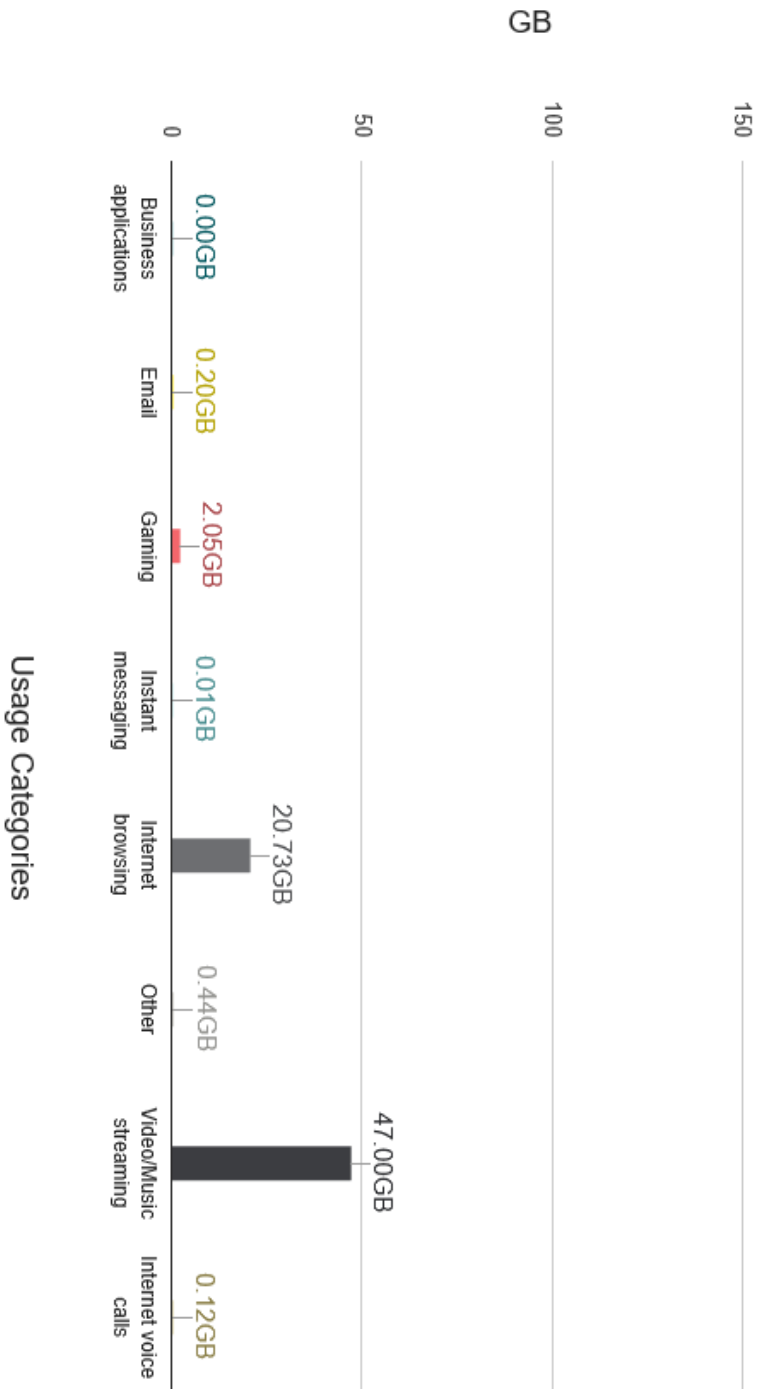
LAST 31 DAYS DATA USAGE

	Mon 27 Aug	Tue 28 Aug	Wed 29 Aug	Thu 30 Aug	Fri 31 Aug	Sat 01 Sep
Download Usage	918.75MB	12163.41MB	14191.27MB	4615.4MB	719.25MB	1601.61MB
Upload Usage	47.48MB	1309.3MB	465.91MB	197.36MB	57.76MB	111.95MB
	Sun 02 Sep	Mon 03 Sep	Tue 04 Sep	Wed 05 Sep	Thu 06 Sep	Fri 07 Sep
Download Usage	6484.74MB	5769.76MB	19229.28MB	4704.27MB	6146.02MB	4379.7MB
Upload Usage	405.68MB	678.77MB	1558.32MB	335.57MB	386MB	174.25MB
	Sat 08 Sep	Sun 09 Sep	Mon 10 Sep	Tue 11 Sep	Wed 12 Sep	Thu 13 Sep
Download Usage	11675.6MB	6382.28MB	8363.59MB	5619.13MB	4002.24MB	16870.29MB
Upload Usage	583.54MB	276.67MB	471.06MB	391.77MB	361.59MB	1041.81MB
	Fri 14 Sep	Sat 15 Sep	Sun 16 Sep	Mon 17 Sep	Tue 18 Sep	Wed 19 Sep
Download Usage	9606.52MB	8375.2MB	1535.59MB	3170.96MB	7885.24MB	5118.41MB
Upload Usage	600.99MB	585.3MB	316.72MB	370.95MB	317.25MB	360.32MB
	Thu 20 Sep	Fri 21 Sep	Sat 22 Sep	Sun 23 Sep	Mon 24 Sep	Tue 25 Sep
Download Usage	8698.45MB	6174.85MB	5948.32MB	6154.74MB	946.92MB	4188.09MB
Upload Usage	229.59MB	341.74MB	778.87MB	239.42MB	182.08MB	126.76MB
	Wed 26 Sep					
Download Usage	0MB					
Upload Usage	0MB					

Appendix 3

- BAR CHART
- Horizontal Bar Chart
 - Vertical Bar Chart

Usage (in GB) details



Appendix 4

Exchange Location	Cabinet No.	Exchange Location	Cabinet No.
Achnamara	1	Kilmartin	2
Aros	2	Lochgilphead	13+1
Barbreck	1	Machrihanish	2
Bowmore	4	Minard	2
Campbeltown	12	Port Askaig	4
Carradale	1	Port Charlotte	2
Clachan	1	Port Ellen	4
Crinan	1	Portnahaven	1
Colonsay	R100	Skipness	R100
Ford	1	Southend	1
Furnace	2	Tarbert	2
Gigha	R100	Tayinloan	R100
Glenbarr	In progress	Tayvallich	1
Inveraray	2	Whitehouse	1
Jura	2		
Kilkenzie	18/19		

Glenbarr exchange: Work on roll-out has started, but it's taking a little longer than expected to reach. Delivery timescales depend on many factors and can be subject to change. BT will have services to this exchange area as soon as they can.

Currently there are no plans for Gigha, Skipness or Tayinloan exchange areas. These will be part of the R100 programme.

Colonsay was part of the GPA programme and was de-scoped from BT/HIE programme for the purposes of state aid regulation.

Due to additional funds being made available Kilkenzie exchange has been a late injection into the programme.

Appendix 5

Technical Interest (extracts and diagrams taken from ISPreview)

In April Ofcom finalised precisely how much extra mobile spectrum has been won in the recent auction of the 4G friendly 2.3GHz and future 5G targeted 3.4GHz radio spectrum bands, which saw EE (BT), O2, Three UK and Vodafone spend a total of £1.37bn.

Overall some 40MHz of frequency in the 2.3GHz band (2350-2390MHz) and 150MHz in the 3.4GHz band (3410-3480MHz and 3500-3580MHz) is being redistributed for use by Mobile Network Operators (much of this was formerly assigned to the Ministry of Defence). Ofcom's spectrum cap, which was designed to help rebalance the market (previously EE had a fair bit more mobile spectrum than anybody else), meant that EE could not bid on the 2.3GHz band but they did win a slice of 3.4GHz.

The 2.3GHz band is considered "*immediately usable*" because many existing 4G based Smartphones and other devices are already capable of harnessing it, while the 3.4GHz band is highly prized because it's intended for use by future multi-Gigabit capable 5G services. Ofcom says the latter will be needed in order to help MNOs to launch "*very fast*" Mobile Broadband services from 2020.

The principal stage of bidding revealed that the four primary MNOs paid a total of £1,355,744,000 to gain various chunks of spectrum in the auction additionally a final assignment stage (i.e. operators bid to determine where in the frequency bands their new spectrum will be located) figure only adds a little extra to total £1,369,879,000. By comparison Ofcom's previous **2.6GHz** and **800MHz** 4G auction raked in £2.367bn.

All money raised from the auction is paid to HM Treasury. The winning bidders have also been issued with licences to use their relevant spectrum holdings.

Winning bidders to whom licence granted	Frequencies	Total base price ¹	Additional prices ²	Licence fees paid ³
EE Limited	3540 – 3580 MHz	£302,592,000	£1,002,000	£303,594,000
Hutchison 3G UK Limited	3460 – 3480 MHz	£151,296,000	£13,133,000	£164,429,000
Telefónica UK Limited	2350 – 2390 MHz	£205,896,000	N/A	£205,896,000
	3500 – 3540 MHz	£317,720,000	0	£317,720,000
Vodafone Limited	3410 – 3460 MHz	£378,240,000	0	£378,240,000

2.3 GHz band plan



3.4 GHz band plan



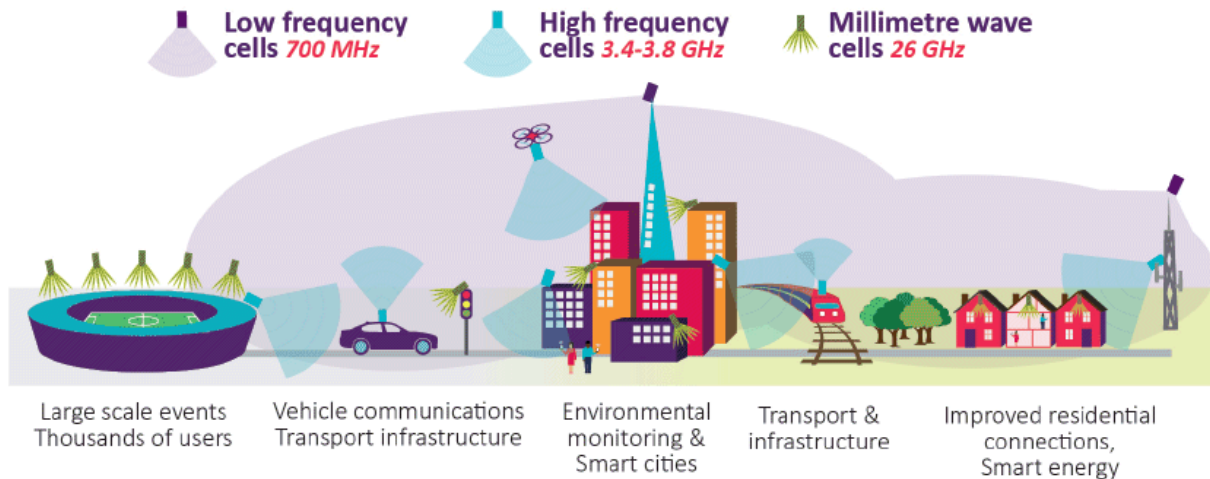
In the end O2, which we expected to spend big in order to support their plans for a possible £10bn market listing or sale (value boost), was the only operator to grab the entire 2.3GHz band and they also got a good chunk of 3.4GHz. Sadly Three UK missed yet another opportunity to grab a good chunk of spectrum but their £250m purchase of UK Broadband Ltd. (Relish Wireless) in 2017 has already given them quite a bit to play with.

Overall Three UK now claims to have access to a total of about 144MHz (frequency) across several 5G friendly mobile bands (e.g. 3.4-3.6GHz and a bit of 3.9GHz, 28GHz and 40GHz), which actually puts them in quite a strong position for when the main commercial 5G rollout begins in a couple of years' time (after that it will take a few years to reach near universal UK coverage), but their position in 4G may have weakened.

Ofcom also plan to auction off further 5G friendly bands over the next couple of years, including the coverage obligation attached 700MHz band, as well as 3.6GHz and 3.8GHz. They are also expect to auction off some significantly higher frequency mobile spectrum in the 20-30GHz+ bands.

Generally it's envisaged that 700MHz will prove useful for cheaply delivering wide 5G coverage in rural areas, albeit not to the same service speeds as mobile broadband networks in urban areas that can be combined (Carrier Aggregation) with higher frequencies over shorter ranges. Ofcom have also issued a proposal for coverage obligations in the award of the 700MHz spectrum band.

After that the bands around 3.4-3.8GHz will focus on urban areas (limited range will confine their use to areas of high demand) and of course the higher frequencies at or above 24GHz (millimetre Wave) should support “very large bandwidths, providing ultra-high capacity and very low latency” (i.e. multi-Gigabit fixed wireless links to homes or businesses).



As always the biggest challenge for 5G will be in matching the promises against the laws of physics and economics. 5G will be an excellent multi-Gigabit capable Mobile Broadband upgrade from the existing networks but a lot of what politicians are promoting for it could be achieved today via existing 4G networks. Indeed we are already seeing some 4G networks, under ideal conditions, that are able to deliver end-user speeds of around 1Gbps.

Arguably a far bigger challenge for 5G will be on the capacity side, not least in terms of customer usage allowances (it's no good having Gigabit speeds if operators can't deliver significantly bigger data allowances) and the difficult challenge of feeding such hyper fast networks with appropriate levels of capacity. The need for wider coverage of pure fibre optic (FTTP/H/Ethernet) lines goes hand in hand with 5G.

All of this is easier said than done and no doubt early 5G services will also attract a higher price tag to help compensate for the hefty network upgrade / spectrum costs. In the end 5G will be a big improvement but it's not that far removed from the earlier 3G to 4G jump and feels more like a logical progression than a truly radical shift.

Ofcom original efforts to get this spectrum auction underway had been hampered by a bitter feud between EE and Three UK. In particular Three UK were unhappy that EE holds 42% of all mobile spectrum versus their 15% and they want Ofcom to impose a 30% cap on spectrum ownership, which would effectively prevent EE from being able to bid on the 3.4GHz band and also cause problems for Vodafone.

A 30% cap could also reduce the money earning potential of the auction itself, which might upset the Government.

Figure 3.1: MNOs' current spectrum holdings

Spectrum Band	Type	BT/EE	Vodafone	O2	H3G	Total
800 MHz	FDD	10	20	20	10.0	60.0
900MHz	FDD	0	34.8	34.8	0	69.6
1452-1492 MHz	SDL	0	20	0	20	40.0
1800 MHz	FDD	90	11.6	11.6	30	143.2
2100 MHz	FDD	40	29.6	20	29.5	119.1
2.6 GHz (paired)	FDD	100	40	0	0	140.0
2.6 GHz (unpaired)	TDD	15	20	0	0	35.0
Total holdings		255	176.0	86.4	89.5	606.9
Share of spectrum		42%	29%	14%	15%	

On the flip side Ofcom had already proposed to introduce a cap of 255MHz on the “immediately useable” spectrum frequency and a total cap of 340MHz on the overall amount that a single operator can hold, which would prevent EE from being able to bid on the 2.3GHz band but not 3.4GHz. As above, Ofcom considers 3.4GHz to be too important for 5G and they don't wish to stop EE from bidding.

The dispute ended up going to court, which “rejected all the challenges” to the regulator's decision and added that the “approach taken by Ofcom was comprehensive, coherent and logical ... it therefore rejected the argument of H3G that the balance struck was too generous to BT/EE and also rejected the argument of BT/EE that it was too tight and rigid”

This page is intentionally left blank